



COMMUNITY HEALTH AND SAFETY WORKS (CHSW)

RESOURCE AND INSPIRATION GUIDE

[DHCD.MARYLAND.GOV/COMMUNITIES/PAGES/CSW/DEFAULT.ASPX](https://dhcd.maryland.gov/communities/pages/csw/default.aspx)



As a former mayor, I know that Maryland community leaders spend every day worrying about how to improve the safety, comfort, and health of their residents and visitors. The Maryland Department of Housing and Community Development is proud to support you in those efforts and to implement Governor Wes Moore's vision of no community left behind as we make this Maryland's decade.

If you're anything like me, you worry about the forgotten corners and crevices of your town. You want to polish your main streets and your neighborhoods to make them shine a little brighter. You want people to feel good and to feel safe when they walk down your sidewalks. We at DHCD are dedicated to supporting the reinvestment and public safety goals you—our local government, nonprofit and private sector partners—have identified. Investing in safe and lovable communities is core to achieving the community revitalization outcomes we all seek, and the Community Health & Safety Works program is a key vehicle in getting us there.

The places our community stakeholders design and use must be more than just adequate and livable. They enrich their community socially, culturally, and economically. Maryland DHCD wants to be your partner in raising the standards of how public space lovability and safety are achieved. Great community places contribute to the vitality and safety of communities as well as the value of surrounding housing.

This *Community Health and Safety Works Resource & Inspiration Guide* was created to help your community do just that. The guide touches on a number of topics, including: improving community health and public safety; fostering environmental justice and climate resiliency; and, resources to promote inclusivity and equity in design. Think of this resource as a tool to take your community's revitalization goals from inspiration and discussion all the way to implementation and celebration.

The *Community Health and Safety Works Resource & Inspiration Guide* will serve as a catalyst to spur revitalization in your community, and I encourage you to partner with us for support. I hope that the information contained within this guide helps to light the pathway to strengthen community engagement and public safety. We are here to support you!

Sincerely,

A handwritten signature in blue ink, appearing to read "J.R. Day".

Jacob R. Day
Secretary, Maryland Department of Housing and Community Development

TABLE OF CONTENTS

- 01** COMMUNITY PLACEMAKING GUIDES
- 02** COLLABORATING WITH ARTISTS
- 03** ENVIRONMENTAL HEALTH & JUSTICE
- 04** WORKING ACROSS SECTORS
- 05** DATA TOOLS
- 06** SUPPLEMENTARY GRANTS
- 07** TECHNICAL ASSISTANCE LINKS



COMMUNITY PLACEMAKING

Community-led collaborations that engage artists and designers to **create lovable and safer spaces for community use**. Projects should demonstrate **existing engagement with the local community, and with artists and/or designers**, to facilitate and inform project design and implementation.



RESOURCES TO GUIDE YOUR GOALS AND INTEGRATE HEALTH AND SAFETY INTO PLACEMAKING EFFORTS



PLACEMAKING GUIDES



Creative bus shelter in Baltimore City

Community Placemaking Across Maryland

Community Placemaking is a process where community members like residents and businesses, artists, culture organizations, non-profits, community developers, and other partners use arts and culture to implement community-led change that shapes the physical and social character of a neighborhood. This approach aims to build capacity among residents to take ownership of their community spaces.

[See examples from The Liberal Arts Action Lab.](#)

- 📍 **Placemaking: What If We Built Our Cities Around Places?**
Project For Public Spaces
- 📍 **Streets as Places: Using Streets to Rebuild Communities**
Project for Public Spaces
- 📍 **Destination Station: Transforming Bus Stops through Community Outreach**
Project for Public Spaces
- 📍 **Navigating Main Streets as Places: A People-First Transportation Toolkit**
Project for Public Spaces
- 📍 **Creative Placemaking: More Than Murals**
Enterprise (45 minute video)
- 📍 **Creative Placemaking on Vacant Properties: Lessons Learned from Four Cities**
Community Progress
- 📍 **Public Spaces that are Welcoming for Children**
Social Life Project

Community Placemaking projects should incorporate at least these three components:

COMMUNITY ENGAGEMENT

A community engagement process that has input from community stakeholders representative of the demographics of the community served by the project

DESIGN PLAN

A design plan that infuses the community's vision with the support of artists and designers as partners in creating the design plan

IMPLEMENT & MAINTAIN

A sustainable implementation plan with consideration of ongoing maintenance needs and programming for the activation of community spaces

Community Placemaking: INTEGRATING HEALTH & NEIGHBORHOOD SAFETY



Projects might include improved lighting design that enhances the atmosphere of the space, decorative fences and entry gates that define the boundaries of a public space and encourage its use for positive, community-building activities like live music, theater, festivals, markets, cultural exchanges, and dance performances that draw community members into the space.



Creative Placemaking and Community Safety

Urban Institute (2018)

Five case studies and one report that studies each project's design, implementation, challenges, and successes in demonstrating how creative placemaking can enhance community safety.



Non-Profits use creative placemaking to address public safety

Non-Profit Quarterly (2018)

A short article that includes examples of how creative placemaking can address public safety concerns by bolstering social capital and embracing the physical, cultural, and social identities that define a place.



Public Art Rooted in Environmental Justice

Next City (2020)

An article that's part of a larger creative placemaking series from Next City called "[For Whom By Whom](#)," that reviews [Mural Arts Philadelphia's Arts and Environment Initiative](#) to create public art around the theme of climate change and resilience.

Community Placemaking: 2 GUIDANCE FOR WORKING — WITH ARTISTS



Projects might include public art installations, including murals and sculptures, as well as performance space designs like stages or decorative backdrops. Projects should include complimentary seating, trees, planters, shade structures, children's play areas, signage, bike racks, and other site amenities that improve residents/visitors experience in the space.



Working with Artists to Deepen Impact

Policy Link (2019)

This brief is the first of six documenting lessons from ArtPlace America's [Community Development Investments program](#). This one explores how urban and rural community-based organizations cultivated collaborative relationships with artists to address neighborhood revitalization projects. [Learn about new engagement strategies, health, and safety outcomes from the other Policy Link briefs in this series.](#)



Hiring Artists: RFPs, Calls for Entry & Commissions

Local Initiatives Support Corporation

Guides and videos that provide technical assistance for community placemaking, including how to design a RFP, conduct asset mapping, and measure impact.



Cultural Work Reference Guide

Arca Foundation (2014)

This publication addresses art's role in social change movements on a historical scale, and outlines best practices for working with artists to create social change on specific projects toward the end of the guide.

COMMUNITY PLACEMAKING INSPIRATION

INTEGRATING COMMUNITY
HEALTH AND SAFETY WITH
COMMUNITY PLACEMAKING
PROJECTS



Image courtesy Neighborhood Design Center/Side A Photography

01. SIGNAL STATION NORTH

Signal Station North is a district lighting plan and public space engagement initiative for Central Baltimore. Lighting and public space designers responded to analysis of current lighting conditions and feedback from months of community engagement to develop several creative concepts that might bring dynamic, functional light and art to the nighttime environment. [See the case study here.](#)

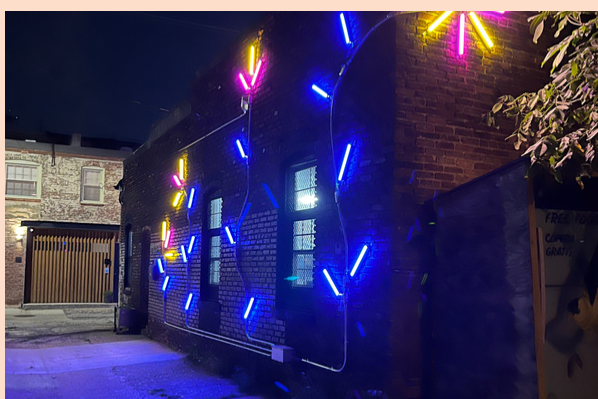


Image: Maura Dwyer

01. CREATIVE BUS SHELTER

The Portland, Maine-based bus shelter project strengthens communities by engaging local artists and cultural support organizations in partnership with transit providers. The goals are to encourage public transportation to reduce carbon emissions, increase ridership, and use the designs to celebrate diversity and immigration.



Image: Michael D. Wilson via Creative Portland

ENVIRONMENTAL HEALTH & JUSTICE

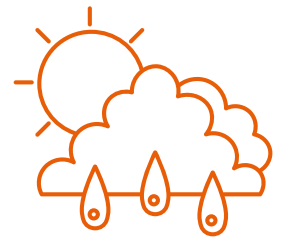
Community-led collaborations that **eliminate predatory and unhealthy practices such as illegal dumping, litter, and traffic hazards**, while addressing **urban heat islands** and other conditions related to **climate change**.



3

RESOURCES FOR GUIDING
ENVIRONMENTAL STEWARDSHIP
AND JUSTICE PROJECTS

CLIMATE RESILIENCE



Improvements might look like planting trees to increase the tree canopy and other streetscape greening to remove impervious surfaces and incorporate stormwater management practices. We encourage you to increase youth, resident, and merchant environmental stewardship through organizing, education and outreach activities to maintain clean, safe, and green public spaces.

01 CHESAPEAKE STORMWATER NETWORK

The Chesapeake Stormwater Network helps align and integrate the efforts of thousands of individuals working on stormwater management across the Chesapeake Bay region. Get notified of newly developed technical resources, free training opportunities, statewide regulatory updates and stormwater alerts.

02 CHARLES COUNTY RESILIENCE AUTHORITY

A nonprofit organization that centers equity and justice in responding to the impacts of climate change in communities across Charles County and the State of Maryland. Projects range from flood barriers, green spaces, building elevations, and stormwater infrastructure.

CLEANING & GREENING STEWARDSHIP



03 CHESAPEAKE BAY STEWARDSHIP STRATEGIES

This guide is designed to give step-by-step methods for designing an effective behavior change campaign to stop littering, with links, planning templates, and other resources to help you along the way.

04 MICHIGAN YOUTH VIOLENCE PREVENTION CENTER CASE STUDY

With the Michigan Youth Violence Prevention Center, communities design installations to stop dumping and reclaim their neighborhoods with urban design to make neighborhoods cleaner and healthier.



VACANT LOT RESTORATION



Improvements remove blight such as litter, graffiti and bulk trash dumping, reduce impervious surfaces, and create “markers” of community pride and ownership such as gardens, new trees, other plantings and upgraded public spaces. Efforts should include establishing or expanding community-driven cleaning and greening activities such as ongoing litter prevention and beautification.

* “Cleaning vacant lots leads to safer and healthier neighborhoods, new study finds”

2018 Article by Plan Philly

* Transforming Vacant Land

Learn about this Philly-based model from the Pennsylvania Horticulture Society

* “Cleaning Up Vacant Lots Can Curb Urban Crime”

2019 article from Manhattan Institute

* “Rid-All Green Partnership Uplifts Urban Farming In Cleveland”

2021 Article from Cleveland Magazine that spotlights an urban farm and crime reduction project

* Community Green Space Resources and Guides

Baltimore Green Space



PEDESTRIAN SAFETY & WALKABILITY



Improvements might create natural and man-made environments via landscaping, fencing and other means to better control pedestrian and vehicular traffic, like traffic calming infrastructure, site fencing, alley gating, transit stop enhancements (seating/shade), and sidewalks.

01 VISION ZERO NETWORK

The Vision Zero Network is a collaborative, nonprofit campaign helping communities set and reach the goal of Vision Zero — eliminating traffic fatalities and severe injuries among all road users — while increasing safe, healthy, equitable mobility. [Check out their Resource Page here.](#)

02 URBAN STREET DESIGN GUIDE

This website offers updated urban design guidelines for designing 21st century streets, with tactics cities use to make streets safer, more livable, and more economically vibrant. The Guide outlines a vision for complete streets and strategies to achieve your goals.

03 AMERICA WALKS WITH MOBILITY JUSTICE

At the regional, state, and neighborhood levels, America Walks provides critical strategic support, training, and technical assistance to partner organizations and individuals to advocate for walkable, equitable, connected, and accessible places.

04 ART IN THE RIGHT OF WAY

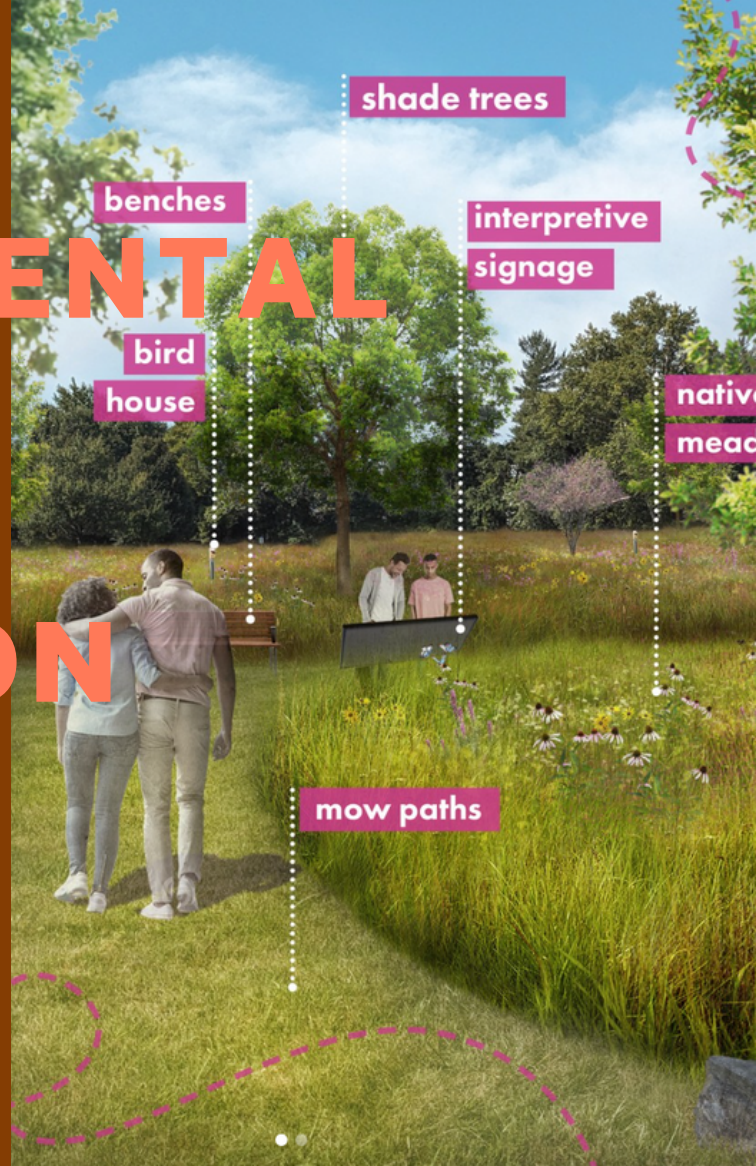
Right of Way (ROW) art projects help calm traffic and beautify urban streets while increasing public space for pedestrians. This guide applies to Baltimore City but can act as a roadmap for other creative traffic calming projects in streets, sidewalks, and alleys across Maryland.



ENVIRONMENTAL HEALTH + JUSTICE INSPIRATION

INTEGRATING ENVIRONMENTAL HEALTH AND JUSTICE WITH COMMUNITY PLACEMAKING

image: EnviroCollab's Meadow Design



01. GROW IVERSON

Grow Iverson is a model in Prince George's County, Maryland, of how a vacant parking lot can become a more environmentally-friendly community space. The resulting plan incorporates community needs, balances multiple distinct spaces, like artistic interventions on the parking garage and fence, gardens, murals, and playful structures—making it a place the community will care about and use for environmental education.



image: Neighborhood Design Center

02. DARLEY PARK

At a prominent corner of the small Darley Park community in East Baltimore, a group of trash-filled, muddy vacant lots were a detriment to sense of place and public health. Now bursting with life, this dynamic park is complete with a performance stage, play area, and ample greenery, including high-quality sod and grass treatments that fight runoff and erosion, diverse flowering hardwood trees, and annual plantings of local wildflowers.



image: Neighborhood Design Center

4 RESOURCES FOR WORKING ACROSS SECTORS AND DIFFERENCE



Co-Existence Toolkit

Gehl Institute and SPUR

This Toolkit includes slides, worksheets, and a set of engagement exercises for city agency staff, nonprofit staff, and public space stewards that inform public space projects by facilitating conversations about access, safety, and design.



A Disability Inclusion Toolkit

Ford Foundation

The toolkit includes definitions and language guidelines, in addition to guidance on creating accessible in-person and virtual events, social media, and disability inclusive employment practices from recruitment to retention.



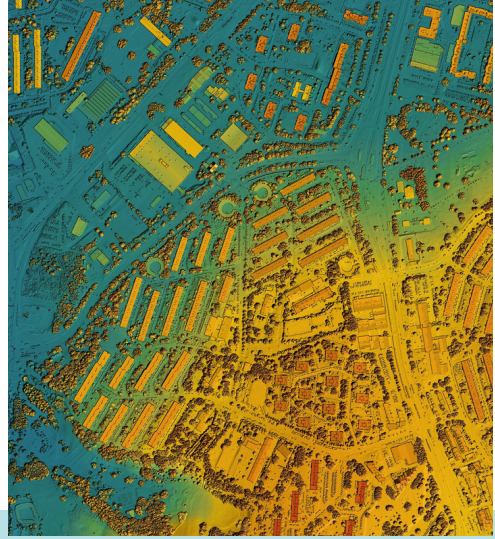
Toolkit for Cooperative, Collective, and Collaborative Cultural Work

Press Press

This project collects and develops models for collective work across cultural differences that aid community organizers in creating change.



5 MARYLAND DATA TOOLS



1 ENVIRONMENTAL JUSTICE MAPPING

[Maryland Department of the Environment Environmental Justice Mapping Tool](#) and [HOW TO Guide](#)

In June 2022, the Maryland Department of the Environment (MDE) launched an online tool utilizing geographic information system (GIS) mapping software to help users identify potential locations of environmental contamination, environmental justice (EJ) issues and/or environmentally overburdened communities.

BROWNFIELD REDEVELOPMENT

[Maryland Brownfield Redevelopment Assistance: Map and Resources](#)

Maryland's Department of Planning launched a webpage dedicated to the [Brownfield Redevelopment Assistance Program](#) in 2020. In addition to answering frequently asked questions, the webpage has links to information on the program's [mission and services](#), [funding and tax incentives](#), various [resources](#), as well as case studies of successful remediations.

TREE PLANTING TRACKING & IMPACT

[Maryland Department of the Environment's Five Million Tree Planting Initiative and Tracking Tool](#)

The 5 Million Trees Initiative was adopted in 2021 to grow 5 million native trees in the state of Maryland by 2031. This multi-agency effort builds upon the state's existing investments in climate action and forest management with a commitment to grow 10% of these trees in urban underserved areas of the state.

PUBLIC HEALTH & THE ENVIRONMENT

[Maryland Department of Health: Environmental Public Health Tracking](#)

This data portal is part of the National Environmental Public Health Tracking Network led by the Centers for Disease Control and Prevention. It can be used to view and download maps and data related to a variety of health and environmental topics in Maryland, such as asthma, lead poisoning, or air pollution. Read the [user guide](#) to help navigate the portal.



2 CRIME DATA

[Group Violence Reduction](#)

A Baltimore City initiative based on a nationally recognized approach to reduce homicides and non-fatal shootings by engaging directly with those most intimately involved in and affected by violence.

[Violent Crime & Property Crime by Municipality](#)

Maryland Open Data Portal

[Public Health Approach](#)

University of Maryland School of Social Work Center for Restorative Change

[Crime Dashboard](#)

Governor's Office of Crime Prevention, Youth and Victim Services

6 ADDITIONAL GRANT PROGRAMS



* Maryland Statewide Grants:

- [Green Streets, Green Jobs, Green Towns](#) - Chesapeake Bay Trust
- [State Revitalization Capital Grants](#) - Maryland Dept. of Housing and Community Development

* Baltimore City Grants:

- [Green Grant](#) - BGE
- [Stronger Neighborhoods Grant](#) - Baltimore Community Foundation

* National Grants:

- [Project for Public Spaces](#)
- [National Endowment for the Arts](#)
- [USA Environmental Protection Agency](#)

RESOURCES FOR PROJECTS ON PUBLIC LAND:

For Projects On Maryland Dept. of Natural Resources (DNR) Land:

If your project is located on land owned by the Baltimore City Department of Recreation and Parks, you must have approval by that department before applying for grant funding. Some applications will require a completed [Intent to Submit Proposal form](#) to be submitted with the application.

For Projects in Baltimore City Right of Way:

The Baltimore City Department of Transportation (DOT) allows community organizations to implement creative projects in Baltimore City's roadways, sidewalks, alleys, and other areas maintained by DOT. Creative projects in DOT's Right-of-Way (ROW) can help to beautify Baltimore neighborhoods, calm traffic, and increase public space for pedestrians. Baltimore City DOT provides [more information about DOT's Right-of-Way process](#).

7 TECHNICAL ASSISTANCE LINKS



- * **Map of Historical Sites in Maryland**
Maryland Historical Trust
- * **Community Garden Action Guides**
Neighborhood Design Center
- * **Maryland Artists Directory**
Maryland State Arts Council
- * **A Public Art and Request for Proposal Guide**, and **Artist Selection Guide**
Maryland State Arts Council
- * **Made You look: Art in the Right of Way Toolkit (Pedestrian Safety)**
Neighborhood Design Center (NDC)
- * **Design for Distance: Affordable, customizable public space plans**
The City of Baltimore, NDC, and other partners
- * **Public Lighting Guidebook**
Neighborhood Design Center
- * **“Blueprint” for Community Engagement**
Neighborhood Design Center
- * **Stormwater Management & Green Infrastructure Guides**
Chesapeake Bay Foundation
- * **Stormwater Infrastructure Education**
Blue Water Baltimore
- * **Prince George’s County Cultural Arts Study**
The Maryland-National Capital Park and Planning Commission